

Name:

Enrolment No:



**UNIVERSITY OF PETROLEUM AND ENERGY STUDIES**  
End Semester Examination, December 2020

Course: Data Environment  
Program: MBA (Business Analytics)  
Course code: DSBA 7002  
Instructions:

Semester: I  
Time: 03 Hours  
Max. Marks: 100

**SECTION A**

Each Questions carry 5 marks

Marks

CO

Attempt all the Questions

6 X 5=30

CO<sub>1</sub>

Q 1

I. Select all the correct statement from the following statements :

- (a) 345.4 is an integer
- (b) Currency is type of numeric data
- (c) "13cm" is an example of alphanumeric data
- (d) All numbers are stored as decimals

II. Digital Information can be

- (a) Structured
- (b) Unstructured
- (c) Semi-structured
- (d) All of the above

III. Which one is the fastest memory?

- a) Flash memory
- b) Optical storage
- c) Disk drive
- d) Tape storage

IV. Full form of OLTP?

- (a) Online Transactional Processing
- (b) Online Transfer Processing
- (c) Online Telephone Processing
- (d) None of these

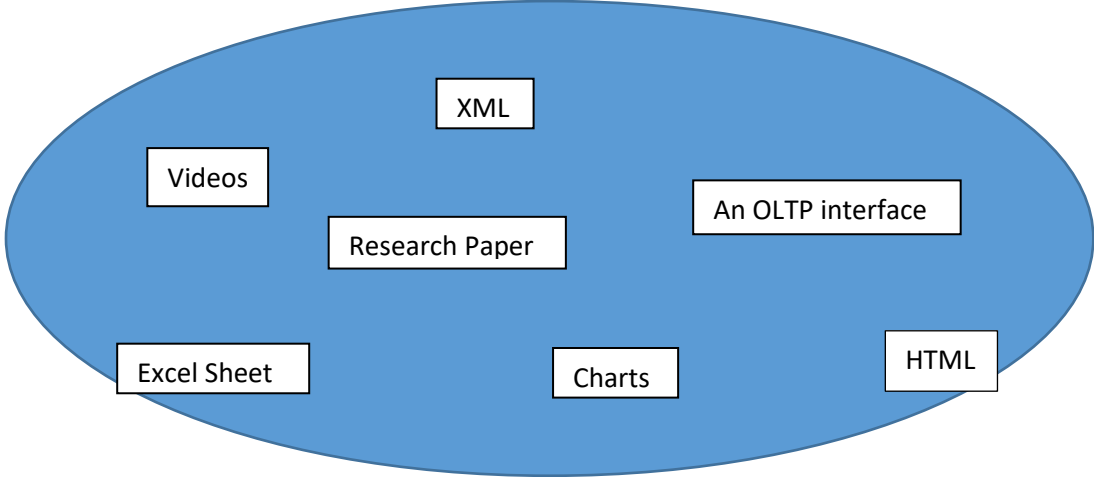
V. What is "365458"

- (a) Data
- (b) Information
- (c) Knowledge
- (d) Wisdom

VI. State true or False about the given statement :

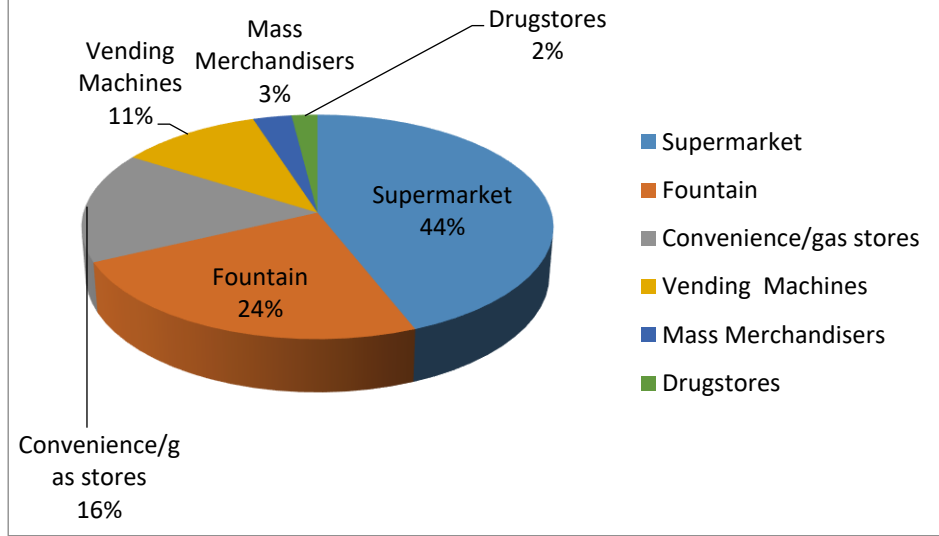
"Title of a web page is an example of Static data"

**SECTION B**

Q	<b>Attempt all five questions</b>	<b>10 X 5=50</b>	<b>CO<sub>2</sub> &amp; CO<sub>3</sub></b>
2.	Take any example and show the progression of Data, Information, Knowledge and wisdom.		<b>CO<sub>2</sub></b>
3.	Explain the concept of coding with suitable example. OR Explain any two method of data visualization with suitable example.		<b>CO<sub>2</sub> &amp; CO<sub>3</sub></b>
4.	Discusses the different types of memory / storage with respect to cost & speed.		<b>CO<sub>2</sub></b>
5.	Discuss the data life cycle.		<b>CO<sub>3</sub></b>
6	<p><b>Classify the given data into three categories: Structured, Semi-Structured and unstructured</b></p>  <p>The diagram consists of a large blue oval containing seven white rectangular boxes, each containing a data type: XML, Videos, Research Paper, An OLTP interface, Excel Sheet, Charts, and HTML.</p>		<b>CO<sub>3</sub></b>

**SECTION-C**

Q	<b>Attempt the question :</b>	<b>20 X 1 =20</b>	<b>CO<sub>4</sub></b>
7.	<p><b>Where are soft drinks sold?</b></p> <p>The soft drink market is an extremely large and growing market in the India and worldwide. In a recent year, 9.6 billion cases of soft drinks were sold in India alone. The data of soft drink sold is displayed graphically using Pie chart:</p>		



Analyze the above pie chart and answer the following:

- How might this information be useful to large soft drink companies?
- How might the packaging of soft drinks differ according to the top four places where soft drinks are sold?
- How might the distribution of soft drinks differ between the various places where soft drinks are sold?