

Roll No: -----



UNIVERSITY OF PETROLEUM AND ENERGY STUDIES

End Semester Examination, December 2017

Program/course: B.Tech (CSE+LLB) Cyber law

Semester : III

Subject: OOPs using C++ and UML

Max. Marks : 100

Code : CSEG 201

Duration : 3 Hrs.

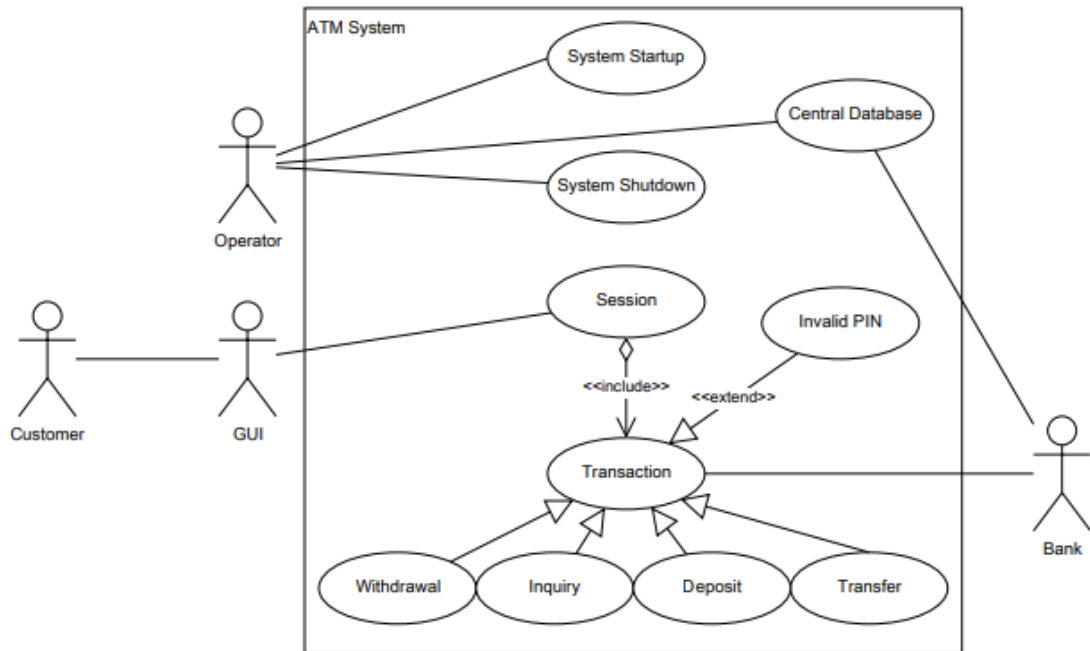
No. of page/s: 4

SECTION-A

(Attempt all questions)

(5*4=20 marks)

1. Compare early binding and late binding.
2. Choose the correct answer:
 - i. Which operator is used to insert the data into file?
 - a) >>
 - b) <<
 - c) <
 - d) None of the mentioned
 - ii. Static data members cannot be private.
 - a) True
 - b) False
 - iii. Pick out the correct statement.
 - a) A derived class's constructor cannot explicitly invokes its base class's constructor
 - b) A derived class's destructor cannot invoke its base class's destructor
 - c) A derived class's destructor can invoke its base class's destructor
 - d) None of the mentioned
 - iv. Kind of diagrams which are used to show interactions between series of messages are classified as
 - a) Activity diagrams
 - b) State chart diagrams
 - c) Collaboration diagrams
 - d) Object lifeline diagrams
3. Explain inline function with example.
4. What is Exception Handling? Explain with example.
5. Consider the following use case diagram and answer the following questions:



- i. The relation between Invalid PIN and Transaction does not conform to the UML standard. State **True/False** and give appropriate **reason**.
- ii. The use case should clarify in what direction data is transferred to and from the Central Database. State **True/False** and give appropriate **reason**.
- iii. The Central Database should be moved outside the ATM System box, but the connections should be kept. State **True/False** and give appropriate **reason**.
- iv. The relation between the Customer and the GUI is not permitted in UML use case diagram syntax. State **True/False** and give appropriate **reason**.

SECTION-B
(Attempt all questions)
(4*10=40 marks)

6. Differentiate between multilevel inheritance and multiple inheritance with an example.
7. What is the constructor? List the characteristics of constructor. Write a C++ program to define a suitable parametrise constructor with default values for the class distance having data members feet and inches.
8. What is a friend function? What are the merits and demerits of using a friend function?
9. What is operator overloading? Write a C++ program to explain operator overloading of binary operator.

SECTION-C
(This section has internal choice.)
(2*20=40 marks)

10. a) Write a function in C++ to print the count of word the as an independent word in a text file STORY.TXT. For example, if the content of the file STORY.TXT is
There was a monkey in the zoo. The monkey was very naughty.
Then the output of the program should be 2. [10]

- b) Write a function in C++ to count and display the number of lines not starting with alphabet 'A' present in a text file "STORY.TXT".

Example:

If the file "STORY.TXT" contains the following lines:

The rose is red.

A girl is playing there.

There is a playground.

An aeroplane is in the sky.

Numbers are not allowed in the password.

The function should display the output as 3. [10]

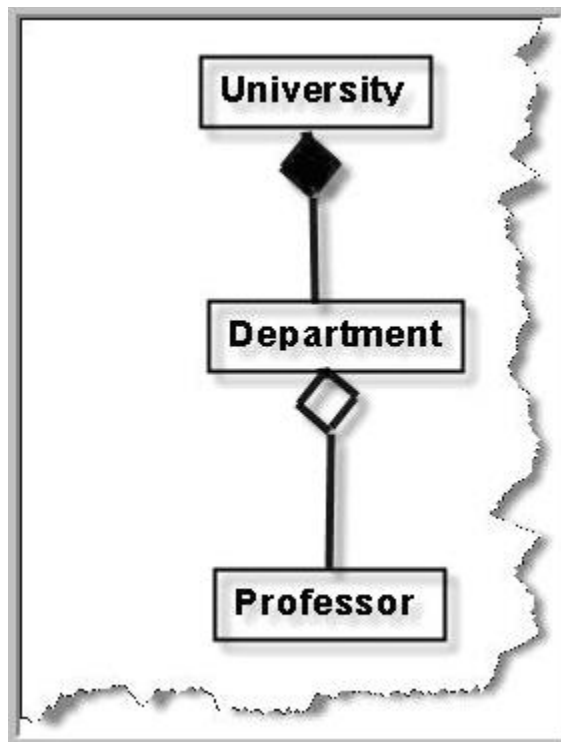
OR

11. Write a function in C++ to add 10 records to a file "STUD.DAT", assuming the binary file is containing the objects of the following class. Also write another function that reads these records from the file. [10+10]

Class STUD

```
{
int Rno; char Name[20];
public:
void Enter(){cin>>Rno;gets(Name);}
void Display(){cout<<Rno<<Name<<endl;}
};
```

12. a) Explain the concept of aggregation and composition in class diagrams with reference to the following diagram: [10]



- b) We have four objects 'Customer', 'Product', 'Stock' and 'Payment'. Show the message flow using **Sequence Diagram** among these objects. It should specify the following:[10]

- i. Customer object sends message to the product object to request if the product is available or not.
- ii. Product object sends message to the stock object to see if the product exists in the stock.
- iii. Stock object answers saying yes or No.
- iv. Product object sends the message to the customer object.
- v. Customer object then sends a message to the payment object to pay money.
- vi. Payment object then answers with a receipt to the customer object.

One of the points to be noted is product and stock object is not active when the payment activity occurs.

OR

- 13.** a) Explain the OMT Methodology in detail. [10]
b) You are supposed to model the following situation using State Diagram: [10]
- i. A home delivery service has the two states wait and deliver.
 - ii. At the beginning, wait is active.
 - iii. As soon as a customer has ordered a product, a transition to deliver takes place.
 - iv. During the transition, the order is processed.
 - v. deliver state stays active until the product has been delivered to the customer, then a transition to wait happens.

.....**ALL THE BEST!!!!**.....

Roll No:



UNIVERSITY OF PETROLEUM AND ENERGY STUDIES

End Semester Examination, December 2017

Program/course: B.Tech (CSE+LLB) Cyber Law

Semester : III

Subject: OOPs using C++ and UML

Max. Marks : 100

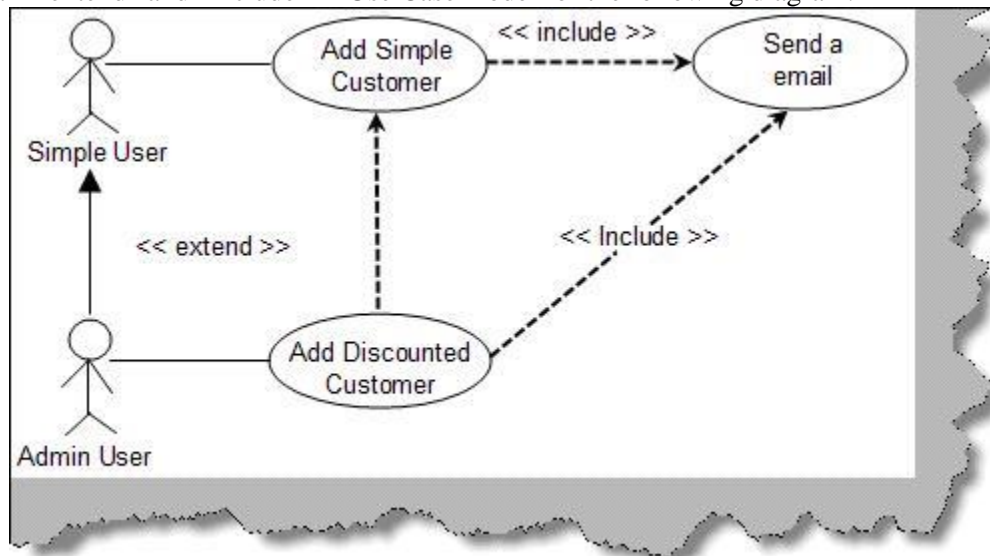
Code : CSEG 201

Duration : 3 Hrs.

No. of page/s: 04

SECTION-A (Attempt all questions) (5*4=20 marks)

1. List the characteristics of a friend function.
2. Define exception handling. Explain the use of try, catch and throw for exception handling in C++ with example.
3. Define pure virtual functions. Write a C++ program to illustrate pure virtual functions.
4. Explain “extend” and “include” in Use Case model for the following diagram:



5. Choose the correct answer:
 - i.

```
#include <iostream>
using namespace std;
void print(int i)
{
    cout << i;
}
void print(double f)
{
    cout << f;
}
```

- ```

int main(void)
{
 print(5);
 print(500.263);
 return 0;
}

```
- a) 5 500.263  
b) 500.263 5  
c) 500.263  
d) none of the mentioned
- ii. `#include <iostream>`  
`using namespace std;`  
`int main()`  
`{`  
 `int a = 5, b = 10, c = 15;`  
 `int *arr[ ] = {&a, &b, &c};`  
 `cout << arr[1];`  
 `return 0;`  
`}`
- a) 5  
b) 10  
c) 15  
d) it will return some random number
- iii. `#include <iostream>`  
`using namespace std;`  
`int main ()`  
`{`  
 `char first, second;`  
 `cout << "Enter a word: ";`  
 `first = cin.get();`  
 `cin.sync();`  
 `second = cin.get();`  
 `cout << first << endl;`  
 `cout << second << endl;`  
 `return 0;`  
`}`
- a) first  
b) second  
c) Returns first 2 letter or number from the entered word  
d) None of the mentioned
- iv. Aggregation is which of the following?  
a) Expresses a part-of relationship and is a stronger form of an association relationship.  
b) Expresses a part-of relationship and is a weaker form of an association relationship.  
c) Expresses an is-a relationship and is a stronger form of an association relationship.  
d) Expresses an is-a relationship and is a weaker form of an association relationship.

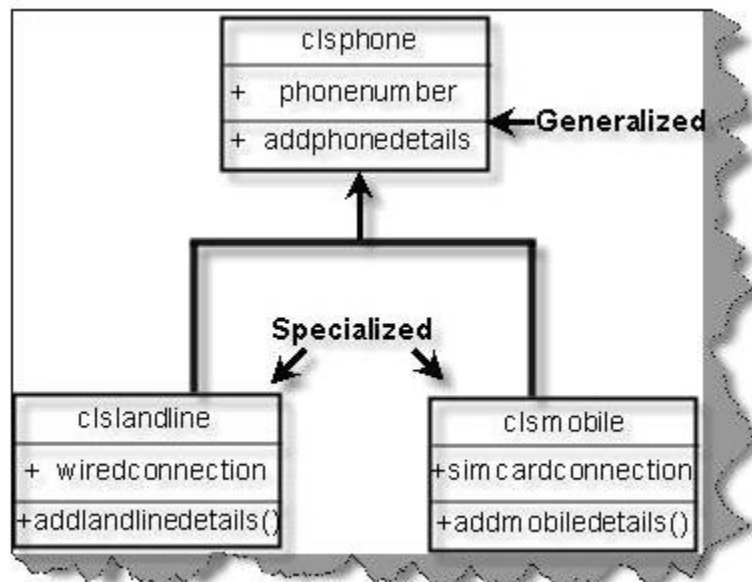
## SECTION-B

**(Attempt all questions)**  
**(4\*10=40 marks)**

6. List the type of inheritances with examples and write a program to implement single inheritance with public access specifier.
7. What are static data members? Differentiate between static data member and static member function.
8. Define pure virtual functions. Write a C++ program to illustrate pure virtual functions.
9. What is the constructor? List the characteristics of constructor. Write a C++ program to define a suitable parametrise constructor with default values for the class distance having data members feet and inches.

**SECTION-C**  
**(This section has internal choice)**  
**(2\*20=40 marks)**

10. a) Explain the concept of generalization and specialization in class diagrams with reference to following: [10]



- b) How is structured analysis and structured design different from OO Analysis and OO Design. Explain. [10]

**OR**

11. a) How do you model the following situation with a UML use case diagram: [10]
  - i. A teacher is conducting an interview with a student. In the course of that, the teacher always has to grade the student.
  - ii. A mother cooks dinner together with her daughter. In the course of that, the mother also always has to mix the cocktails.
- b) What is UML? What are the benefits of UML for system designers? Explain any two types of UML diagrams. [10]
12. a) Write a C++ program, which initializes a string variable to the content "Time is a great teacher but unfortunately it kills all its pupils. Berlioz" and outputs the string to the disk file OUT.TXT. [5]

- b) Write a user-defined function in C++ to read the content from a text file OUT.TXT, count and display the number of alphabets present in it. [5]
- c) Write a function to count the number of blank present in a text file named "OUT.TXT". [5]
- d) Write a function to count number of words in a text file named "OUT.TXT". [5]

**OR**

13. Assuming the class DRINKS defined below, write functions in C++ to perform the following:
- (i) Write the objects of DRINKS to a binary file. [10]
  - (ii) Read the objects of DRINKS from binary file and display them onscreen when DNAME has value "INDY COLA". [10]

```
class DRINKS
{
int DCODE; char DNAME[13]; //Name of the drink
int DSIZE; //Size in liters
float DPRICE;
public:
void getdrinks() {cin>>DCODE>>DNAME>>DSIZE>>DPRICE;}
void showdrinks() {cout<<DCODE<<DNAME<<DSIZE<<DPRICE<<endl;}
char *getname() {return DNAME;}
};
```

.....**ALL THE BEST!!!!**.....